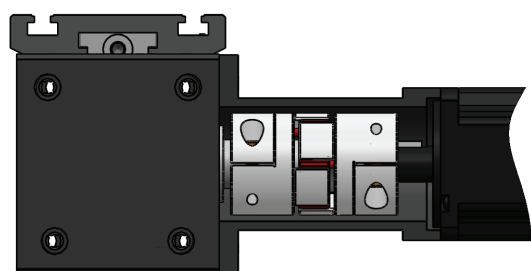
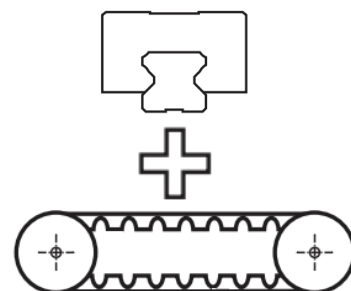
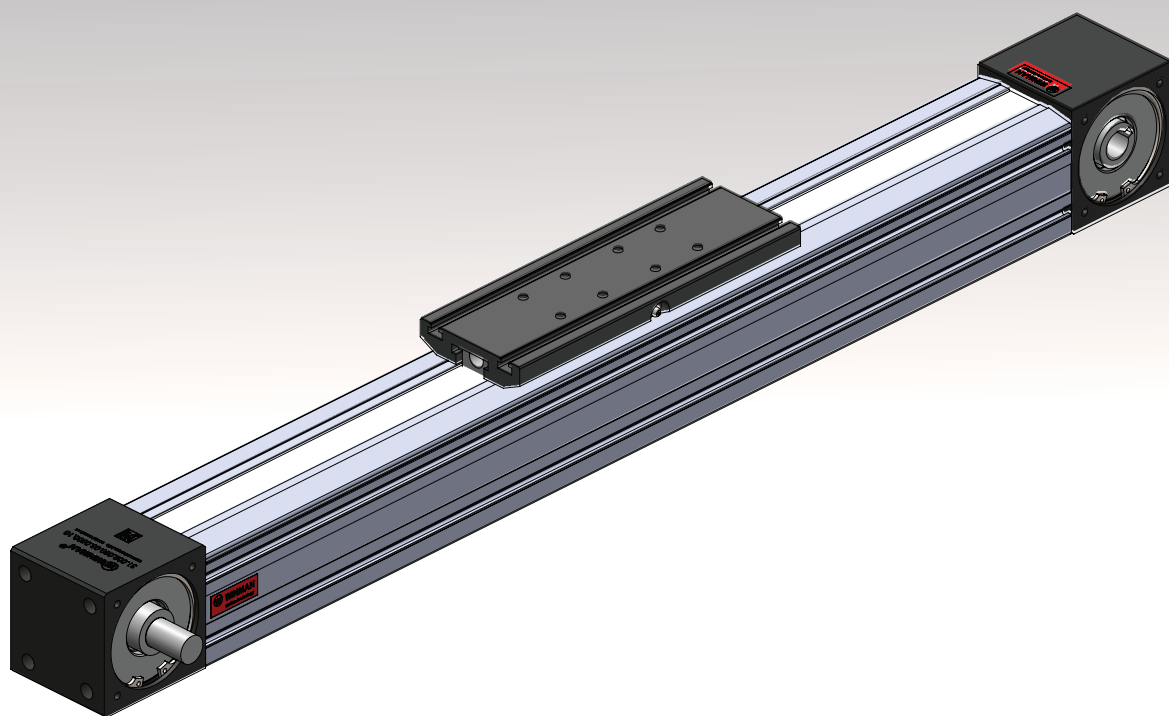


# WMCS

## LİNEER MODÜL

## LINEAR MODULE



Sipariş Kodu / Ordering Code

**WMCS - TB - 080 -**
**1**

 Model  
Model

**2**

 Tahrik Birimi  
Drive Unit

**3**

 Boyut  
Size

**4**

 Strok  
Stroke

**5**

 İlerleme  
Lead

**6**

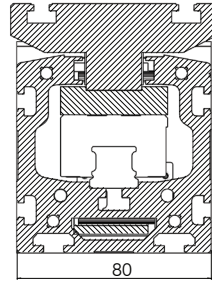
 Tahrik Yönü  
Driving Side

**7**

 Bağlantı Kiti Modeli  
Mounting Kit Model

**8**

 Bağlantı Kiti Montaj  
Mounting Kit Assembly

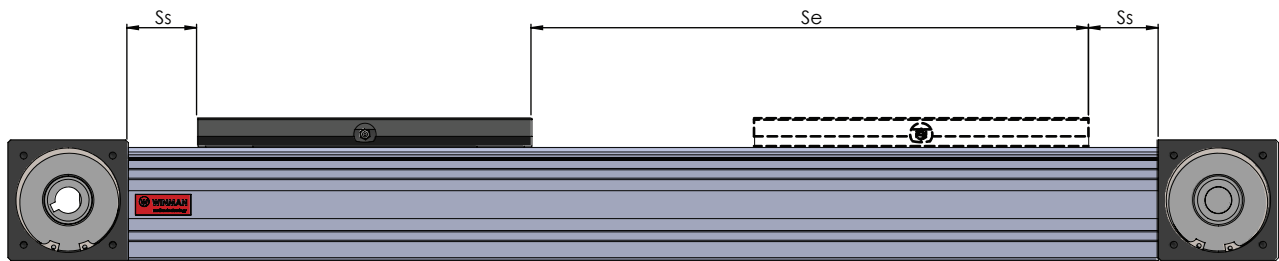
**1 - Model / Model**
**WMCS : Triger Kayışlı Modül / Timing Belt Driven Linear Module**
**2 - Triger Kayış / Timing Belt**
**TB : Triger Kayış / Timing Belt**
**3 - Boyut / Size**

**WMCS - TB - 080**
**4 - Strok / Stroke**
**0000 : Maksimum 4750 mm / Maximum 4750 mm**
**Hareket Stroku / Movement Stroke**

İstenilen çalışma strokuna ek olarak 2xHatve kadar her iki tarafta da boşluk bırakılması tavsiye edilir.  
In addition to the desired movement stroke, it is recommended to leave a space on both sides until 2xPitch.

$$S_m = S_e + 2.S_s$$

$$S_s = 50 \text{ mm}$$

$S_m$  : Hareket Stroku / Movement Stroke  
 $S_e$  : Etkin Hareket Stroku / Safety Stroke

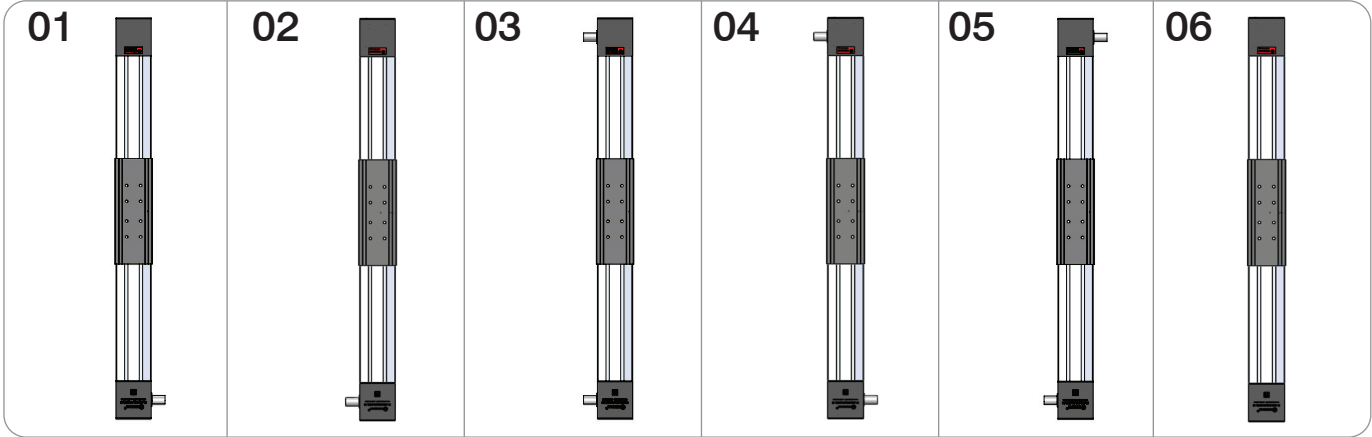

**5 - İlerleme / Lead**
**200 : 200 mm/devir / 200 mm/rev**

Sipariş Kodu / Ordering Code

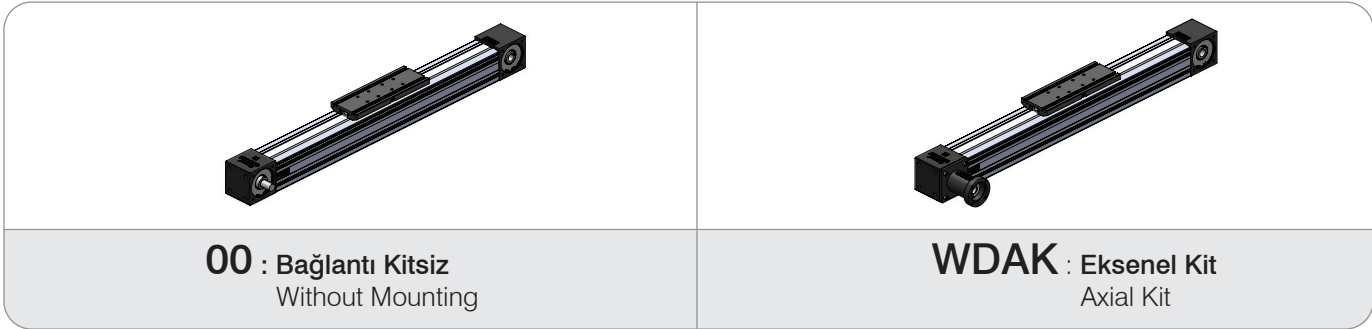
## WMCS - TB - 080 -

1	2	3	4	5	6	7	8
Model Model	Tahrik Birimi Drive Unit	Boyut Size	Strok Stroke	İlerleme Lead	Tahrik Yönü Driving Side	Bağlantı Kiti Modeli Mounting Kit Model	Bağlantı Kiti Montaj Mounting Kit Assembly

### 6 - Tahrik Yönü / Driving Side



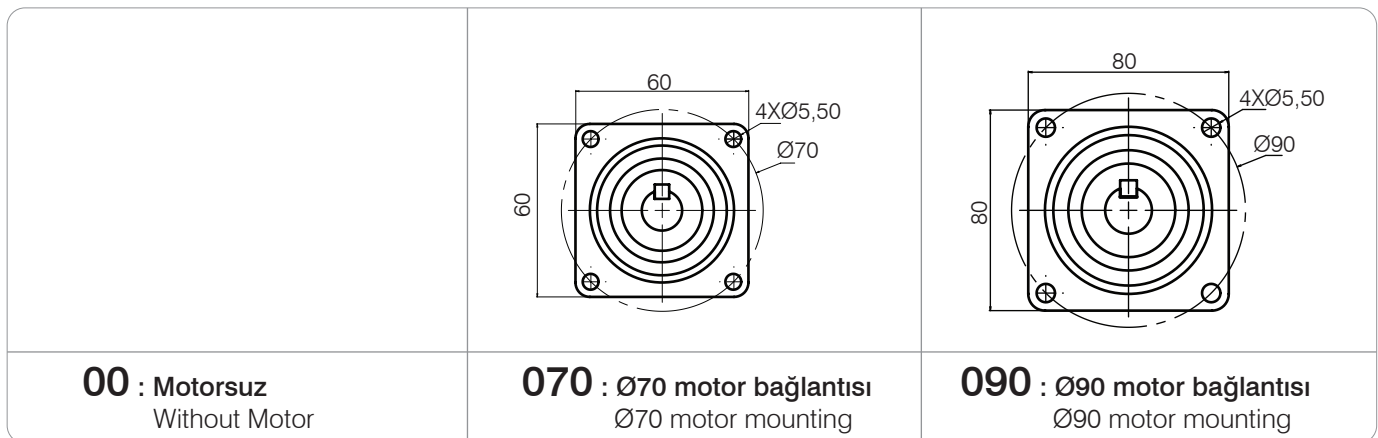
### 7 - Bağlantı Kiti Modeli / Mounting Kit Model



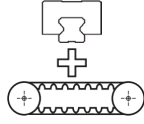
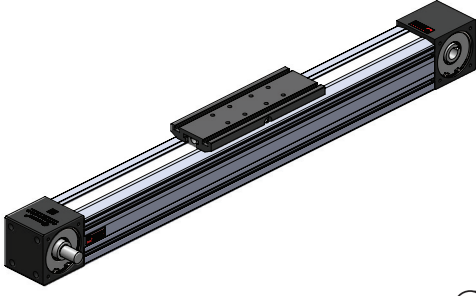
Not 1 : Farklı motor tipleri ve ölçüleri için irtibata geçiniz. Note 1 : Please contact for different motor types and mounting sizes.

Not 2 : Redüktörlü ürünler kullanmak için irtibata geçiniz. Note 2 : Please contact for to use gearbox.

### 8 - Bağlantı Kiti Montaj / Mounting Kit Assembly



## WINMAN WMCS Serisi Triger Kayışlı Modüller / WMCS Series Timing Belt Driven Linear Modules

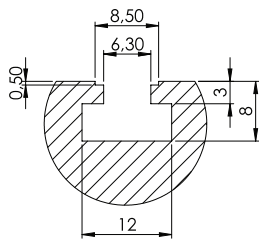
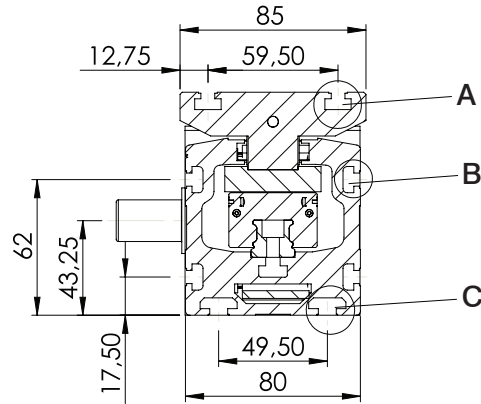
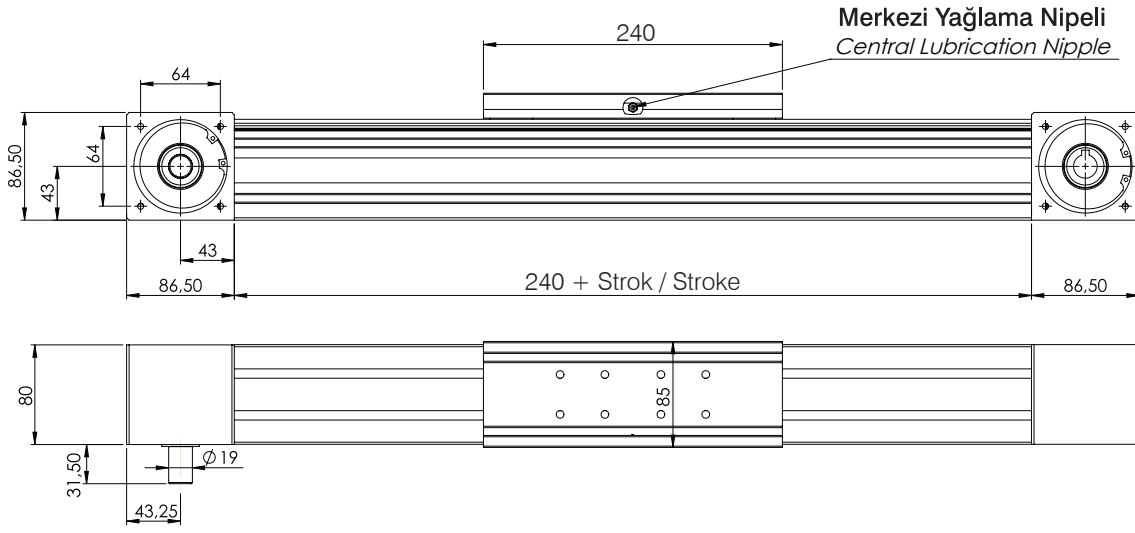
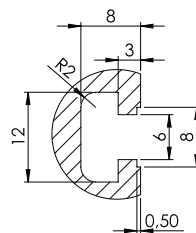
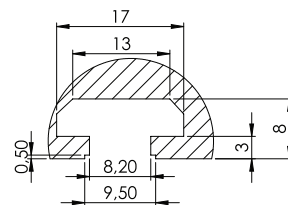


## Özellikler / Specification

Statik Yük / Static Load	Co	kN	48,6
Dinamik Yük / Dynamic Load	C	kN	28,2
Maximum Strok / Maximum Stroke		mm	4750
Tekrarlama Hassasiyeti / Repeating Accuracy		mm	< 0,1
İvmelenme Max / Acceleration		m/s <sup>2</sup>	5

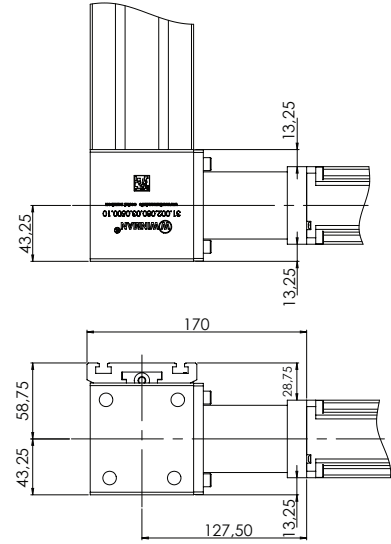
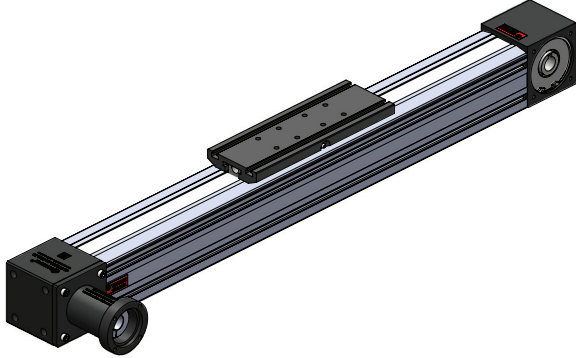
Not : Verilen değerler teorik değerlerdir. Emniyet kat sayısını 5 almanızı öneririz.  
 Note : Calculated value are theoretical values. We recommend you to calculate safety factor as five(5).

## Teknik Çizim / Technical Drawing

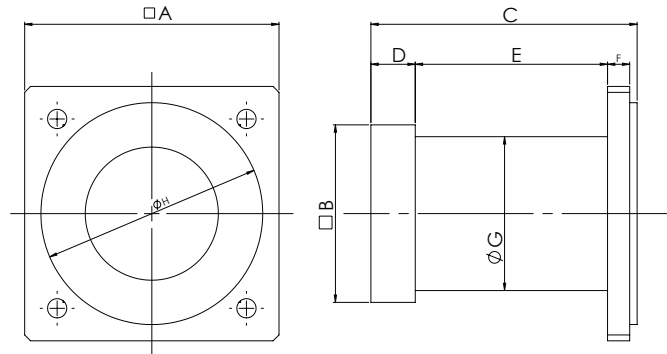

 DETAY A  
 DETAIL A

 DETAY B  
 DETAIL B

 DETAY C  
 DETAIL C

WDAK Eksenel Bağlantı Kiti / WDAK Axial Mounting Kit

Teknik Çizim / Technical Drawing

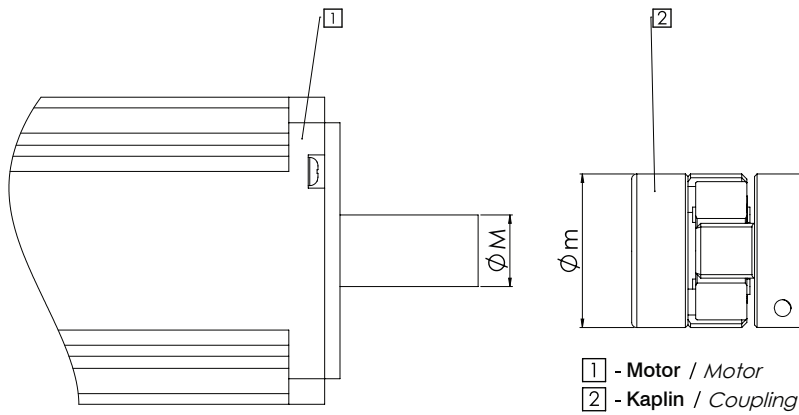


Kampana / Bellhousing

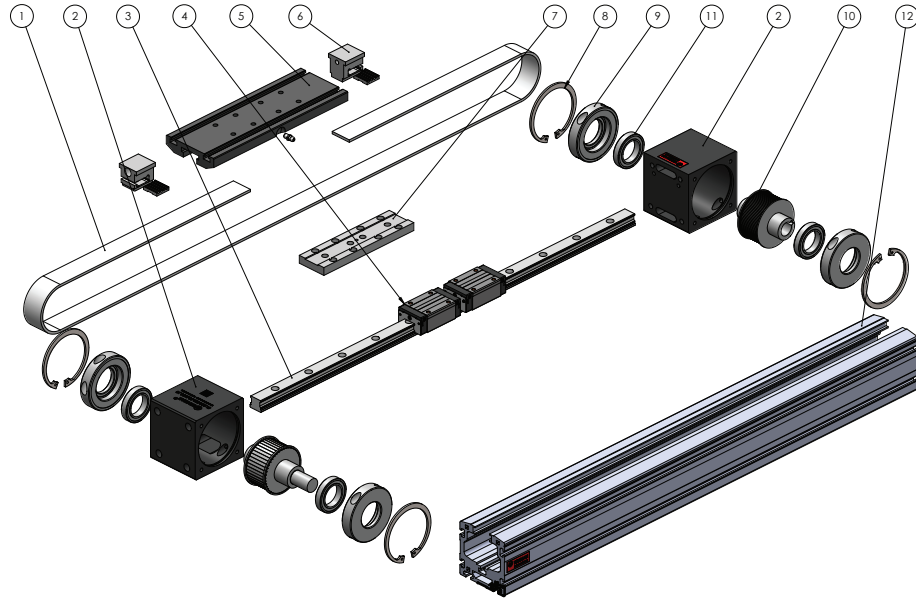
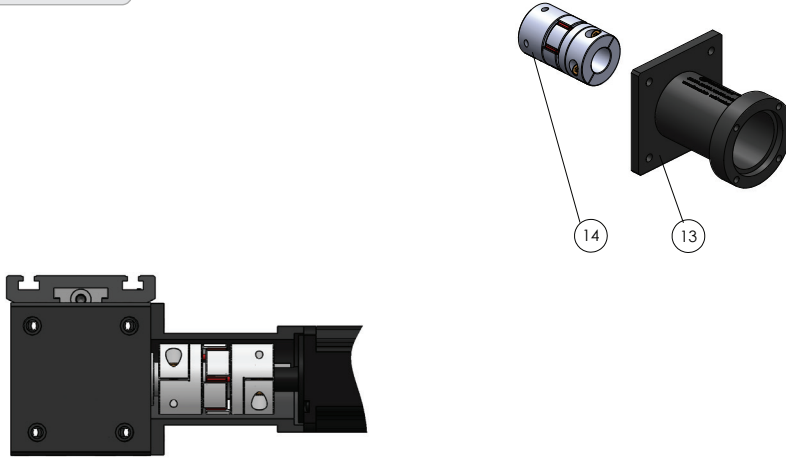


Motor Tipi Motor Type	A	B	C	D	E	F	G	H
WDAK - 070	86	60	90	15	65	7,5	52	75
WDAK - 090	86	80	92,7	15	64,5	10	55	75

Kaplin / Coupling



Motor Tipi Motor Type	M	m	Kaplin Modeli Coupling Model
WDAK-070	14	30	WWJCL - 30CRD
WDAK-090	19	40	WWJCL - 40CRD

**Montaj / Assembly**
**WMCS Lineer Modül**  
 WMCS Linear Module

**WDAK Eksenel Kit**  
 WDAK Axial Kit


Parça Piece	Miktar Qty	Parça Adı Part Name	Montaj Assembly
1	1	Triger Kayış / Timing Belt	Modül Module
2	2	Kapak / Block	
3	1	Lineer Ray / Linear Guide	
4	2	Lineer Araba / Linear Carriage	
5	1	Bağlantı Plakası / Mounting Plate	
6	2	Ara Bağlantı Plakası / Interface Plate	
7	1	Kayış Bağlantı Parçası / Belt Mounting Parts	
8	4	Emniyet Segmanı / Security Clip	
9	4	Rulman Kapağı / Bearing Block	
10	1	Dişli Kasnak / Timing Belt Pulleys	
11	4	Rulman / Bearing	
12	1	Profil / Profile	
13	1	Kampana / Bellhousing	Eksenel Kit Axial Kit
14	1	Kaplin / Coupling	

**- İlk yağlama montaj sırasında yapılır.**

*Basic lubrication is done in-factory before shipment.*

**- Kapaklardaki dişli kasnakları yataklayan rulmanlar normal çalışma koşullarında tekrardan yağlama gerektirmez.**

*Bearings of the timing belt pulleys have been lubricated for life and will not require in-service lubrication under normal operating conditions.*

**- Kompakt modülün yağlaması için bağlantı plakasında yağlama nipelini için yer bulunmaktadır.**

*For lubrication of the compact module, link for lubrication is in the connection plate.*

**- Kompakt modüller sadece uygun gres yağlar ile yağlanmalıdır.**

*Compact Modules are designed for grease lubricants only!*

**- Lityum içerikli gres yağlar kullanılmalıdır.**

*Lithium soap grease should be used.*

**- Dikkat: grafit ya da MoS içeren gresler tercih etmeyiniz!**

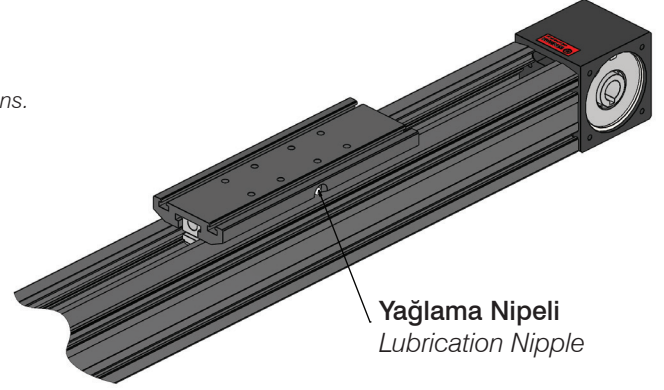
*Caution: Do not use grease containing graphite or MoS!*

**- Yağlama, her 400 çalışma saatinde ya da 800km çalışma mesafesine ulaşıldığında yapılır.**

*Lubrication is performed every 400 hours or 800 km total working distance by normal operating conditions.*

**- Yağlama miktarı normal çalışma koşullarına göre tabloda verilmiştir.**

*Lubrication quantity is provided in table by normal operating conditions.*



**Yağlama Nipeli**  
Lubrication Nipple

**Normal Çalışma Koşulları / Normal Working Conditions**

Ortam Sıcaklığı / Ambient Temperature	°C	10 ~ 40
Çalışma Hızı / Speed	m/s	≤ 4,0
Yük / Load	kN	≤ 0,2 C
Strok / Stroke	mm	> 60
Yağlama Periyodu / Lubrication Period	Km	800
	Hour	400
Yağlama Miktarı / Lubricate Dose	cm <sup>3</sup>	1,4